

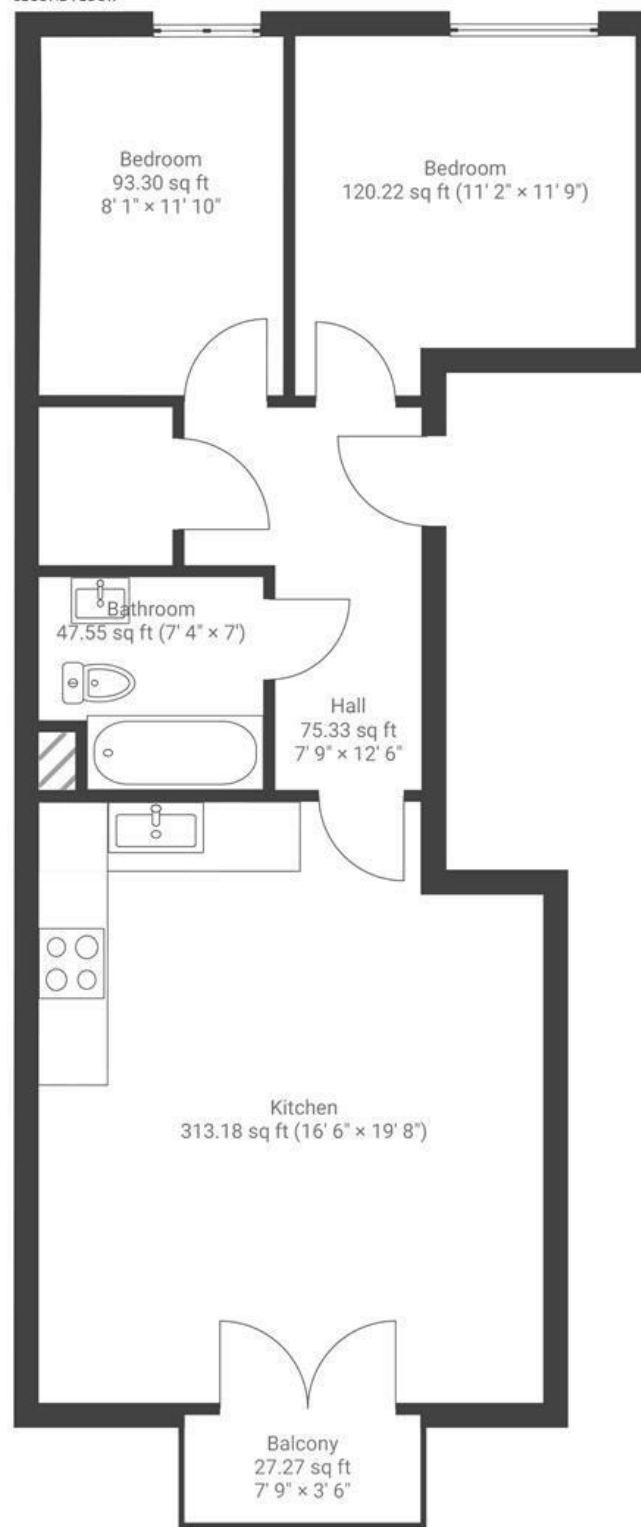
Rennisons Yard

MONTPELIER

APPROXIMATE FLOOR AREA
67.35 SQM / 725 SQFT



SECOND FLOOR



Boardwalk

Rennisons Yard

24 PICTON LANE, BRISTOL



£335,000



2 Bedrooms



BS6 5EB



1 Bathrooms

"Our first home has been a peaceful and tranquil sanctuary right in the heart of the city, a truly happy place we're so sad to leave. It's the kind of home where you can start your day with a coffee on the south-facing balcony, basking in the morning sun, and end it with a cocktail on a warm summer evening."

